

Functions and Features

Light Source	300W Xenon / 3LED
Chromoendoscopy	CBI Regular, CBI Indigo & CBI Aqua (3LED only)
Image Enhancement	Structure/Edge/Color
Brightness Adjustment	Auto/Manual
Digital Zoom	1/1.2/1.5/2x
IRIS	Peak/Average/Auto
Storage	USB
Dual Image Display	Two images
User Profile	Customizable RFID card

FHD-GT/CL

	Model	Working length	Diameter of distal end	Diameter of insertion tube	Diameter of instrument channel	Depth	View of field	Range of bending
Video Gastroscopes	FHD-GT200	1050mm	9.8mm	9.6mm	2.8mm	3-100mm	145°	U210°D90°L100°R100°
	*FHD-GT200J	1050mm	10.5mm	10.5mm	2.8mm	3-100mm	145°	U210°D90°L100°R100°
Video Colonoscopes	FHD-CL200I	1300mm	12.8mm	12.8mm	3.7mm	3-100mm	145°	U180°D180°L160°R160°
	FHD-CL200L	1650mm	12.8mm	12.8mm	3.7mm	3-100mm	145°	U180°D180°L160°R160°
	*FHD-CL200JI	1300mm	12.8mm	12.8mm	3.7mm	3-100mm	145°	U180°D180°L160°R160°
	*FHD-CL200JL	1650mm	12.8mm	12.8mm	3.7mm	3-100mm	145°	U180°D180°L160°R160°

(*: Forwarding water-jet)

AOHUA



Shanghai Aohua Photoelectricity Endoscope CO.,LTD.

AOHUA

China

No.66, Lane133, Guangzhong Road,Minhang District, Shanghai, P.R.China.(Postcode: 201108)

Tel: 86-21-52210929

Email: marketing@aohua.com

website: www.aohua.com/en

Germany

Fichtenstrasse 27, Brunnthal, Munich

Tel: +49(0)81 04/8908-10

See the Manual for details of contraindications or precautions.

v5.0_2304

AQ-200

Video Endoscopy System

A one-stop, full HD and advanced video endoscopy system armed with a variety of exclusive features

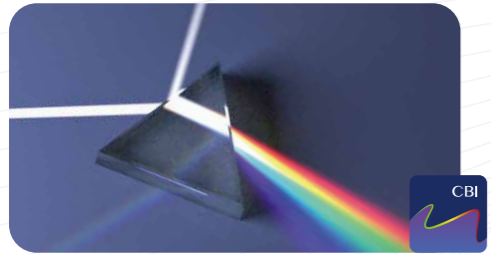
The AQ-200 System is the result of combining 30 years of experience in flexible endoscopy and our multiple, exclusive and innovative technologies. The AQ-200 proudly presents you the premium system whose functions and flexibility helps you fulfilling your requirements at the current stage and to widen it in the future. No matter if diagnostic or therapeutic procedures, the AQ-200 supports you in the daily work.

Boosted image



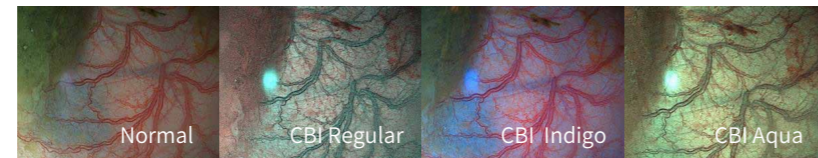
Full HD image resolution

Equipped with a 2-megapixel CMOS sensor and a FHD signal output processor, the AQ-200 offers you a clear 1080p full HD resolution. In combination with our 27 inches medical grade monitor the system raises your efficiency on diagnostic and complex operations.

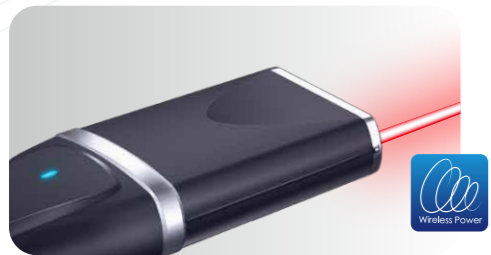


CBI Plus optical chromoendoscopy

The optical chromoendoscopy has proven itself and is widely used, as it offers a convenient tool to detect and characterize early cancer in the GI tract. CBI Plus allows the best balance among illumination, vascular color contrast, and mucosal structure giving you clarity over the vascular patterns and contrast at the same time.

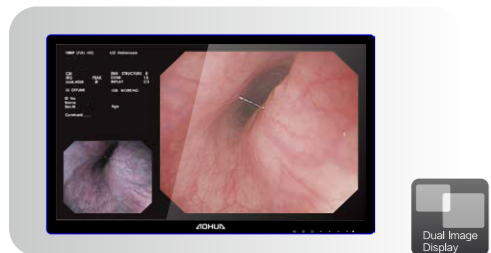


Exclusive innovation



Laser transmission and wireless power supply

The AQ-200 adopts innovative technologies to evolve a new standard. The Laser transmission guarantees a high speed and stable signal transmission, providing a real-time quality image. Paired with a wireless power supply, the sealing performance is greatly improved, protecting your devices and patients.



Dual image display

Displaying both, a white light and chromoendoscopic image on the same screen is an excellent educational tool to help demonstrate the difference shown on CBI mode. By using this exclusive feature you can shorten the learning curve in your teching facility.



Mastery maneuverability



The 4th generation handle design

With experience of the previous three versions, the AQ-200 adopts our 4th generation handle design and easily accessible remote buttons, to ergonomically fit your hand and gesture. This remarkably relieves your fatigue and discomfort during a long or complex operation. Thanks to the new insertion tube the force transmission gets more efficient and consistent and shortens your procedure time.



Waterproof and one-touch connection

Thanks to laser transmission and wireless power supply, the AQ-200 scopes realize a complete waterproof and one-touch connection allowing to connect and disconnect by a single hand. This lightens your team's workload before and after procedures, especially on reprocessing and disinfection.

