

Functions and Features

Illumination	3-LED Light Source
Chromoendoscopy	CBI Regular / CBI Indigo
Image Enhancement	Structure / Edge / HBE
Brightness Adjustment	Automatic / Manual Mode
Digital Zoom	1.0x, 1.2x, 1.5x, 1.8x, 2.0x, 4.0x
Freeze and Playback	Freezes the real-time image and plays it back
IRIS	Peak/ Average/ Auto
Internal Storage	500G, 500 Users Profiles, 100,000+ Examination Records
External Storage	USB
User Interface	10.1-inch Customizable Touchscreen. Rotatable Panel
Dual Image Display	Displays both WLI images and CBI images simultaneously
DICOM	Supports DICOM 3.0 Protocol

Aohua Endoscopy Co., Ltd.

China

No.66, Lane 133, Guangzhong Road, Minhang District,
Shanghai, P.R.China.(Postcode:201108)
Tel: 86-21-52210929

Email: oversea-sales@aohua.com

Website: www.aohua.com/en

Please refer to the manual for details of contraindications or precautions.

Germany

Fichtenstrasse 27
85649 Brunnthal-Hofolding
Tel: +49(0)8104/8908-0

AOHUA

AOHUA

SELENAR Series

Illuminating New Standards in Endoscopy

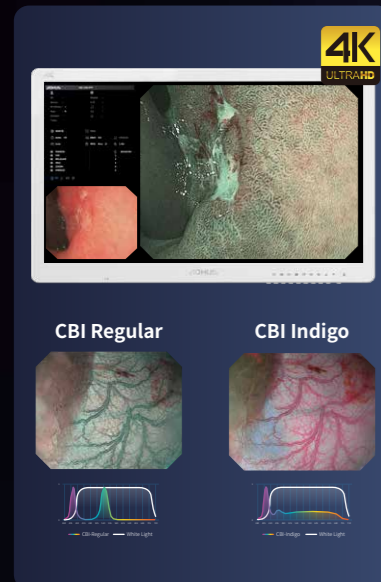


AQ-150 Pro
Video Processor

SELENAR AQ-150 Pro Ultra HD Endoscopy System

Illuminating New Standards in Endoscopy

The Selenar AQ-150 Pro combines cutting-edge innovations into a single package, bringing your future aspirations to real life today. Premium features are now within your grasp, allowing you to exceed your expectations.



4K Technology: The Next Generation of Endoscopy Has Arrived

The AQ-150 Pro features a 4K display, delivering exceptional image quality that reveals intricate details and showcases the system's out-standing image performance.

Advanced Multi-LED Illumination System

2 CBI Modes

The Selenar AQ-150 Pro features a beneficial 3-LED light source, providing various optical chromoendoscopy modes, such as the frequently utilized CBI Regular and CBI Indigo, tailored for diverse situations.

Dual Image

The Selenar AQ-150 Pro shortens the learning curve of chromoendoscopy by incorporating a dual image display, serving as an effective educational resource to illustrate the distinctions between white light and chromoendoscopy.

10.1-Inch Intuitive Touch Panel

The system can be easily managed through a 10.1-inch touch screen. With its adjustable angle and customizable features, the touch screen ensures the ease, convenience, and intelligence of system control. DICOM feature integrated.



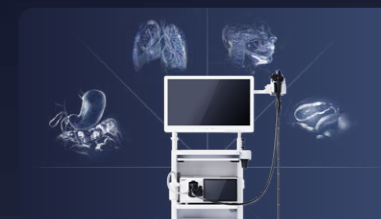
Artificial Intelligence: Your Companion in Endoscopy

Extensive data analysis and advanced deep learning techniques immediate assessment and automated data collection to help you become an expert on endoscopy field. Your tireless partner all the time.



Versatile Applications

The Selenar AQ-150 Pro builds upon the legacy of its predecessors while being specifically engineered for the latest generation of endoscopes. It caters to the diverse requirements of various departments including gastroenterology, pulmonology, respiratory care, and ENT.



Colo Smart Assistance (CSA)

Undergoing a colonoscopy can be inherently difficult, but now you can approach this procedure with assurance.



Elastic Bending

The elastic bending section enhances patient comfort and increases the efficiency of colonoscopy procedures.

Adjustable Stiffness

The flexibility of the colonoscope insertion tube can be modified to accommodate various physician preferences or the anatomical characteristics of the colon.

Sync Force Transmission

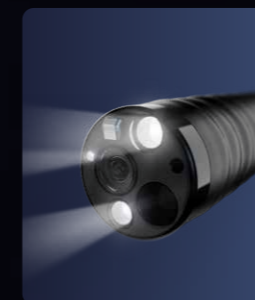
Effectively transmits force to enhance maneuverability during colonoscopy procedures.

Superior Standards, Outstanding Specifications



5th Generation Handle

Enhanced ergonomic design and decreased handle weight for the fifth generation to further minimize fatigue.



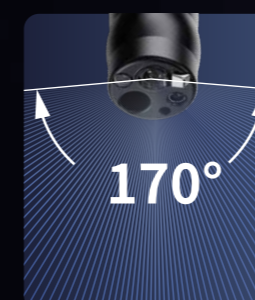
3 Light Guides

The endoscopic imaging system is enhanced by three light guides, which significantly improve illumination, providing greater and more uniform brightness, particularly in distant dark regions.



Forward Waterjet

The forward waterjet function comes standard, enhancing the efficiency and convenience of your process.



Wide Field of View

Colonoscopes feature a 170° wide field of view, which helps to minimize the miss rate, particularly in areas with colon folds.



Large Instrument Channel

Extensive instrument channels are accessible, allowing you to expand your skills beyond restricted applications.