

Functions and Features

Illumination	3-LED Light Source
Chromoendoscopy	CBI Regular / CBI Indigo
Image Enhancement	Structure / Edge / HBE
Brightness Adjustment	Automatic / Manual Mode
Digital Zoom	1.0x, 1.2x, 1.5x, 1.8x, 2.0x, 4.0x
Freeze and Playback	Freezes the real-time image and plays it back
IRIS	Peak / Average / Auto
Internal Storage	500G, 500 Users Profiles, 100,000+ Examination Records
External Storage	USB
User Interface	10.1-inch Customizable Touchscreen
DICOM	Supports DICOM 3.0 Protocol

AOHUA

SELENAR Series

Illuminating New Standards in Endoscopy



Aohua Endoscopy Co., Ltd.

AOHUA

China

No.66, Lane 133, Guangzhong Road, Minhang District,
Shanghai, P.R.China.(Postcode:201108)
Tel: 86-21-52210929

Email: oversea-sales@aohua.com

Website: www.aohua.com/en

Please refer to the manual for details of contraindications or precautions.

Germany

Fichtenstrasse 27
85649 Brunnthal-Hofolding
Tel: +49(0)8104/8908-0

v4.1_2412_GB

AQ-120
Video Processor

SELENAR AQ-120 FHD Endoscopy System

Illuminating New Standards in Endoscopy

The Selenar AQ-120 is engineered to provide you with access to advanced standards and state-of-the-art technologies resulting from industry advancements, allowing you to enhance your daily practice in a cost-effective manner.



FHD Superior Image Resolution

The AQ-120 adapts a FHD CMOS sensor to provide a high quality image. It produces a clear and sharp contrast on the edge between different tissues, displaying a superior image with more details to you.

Beneficial 3-LED featuring 2 CBI Modes

The Selenar AQ-120 features two widely utilized chromoendoscopy modes, which are made possible by the diverse combinations of its three LED light sources. These modes deliver effective, rapid, and precise solutions for clinical challenges across various situations.



10.1-Inch Intuitive Touch Panel

The entire system can be effortlessly managed through a 10.1-inch touch screen. This customizable interface enhances the ease, convenience, and intelligence of system control.

DICOM feature integrated.



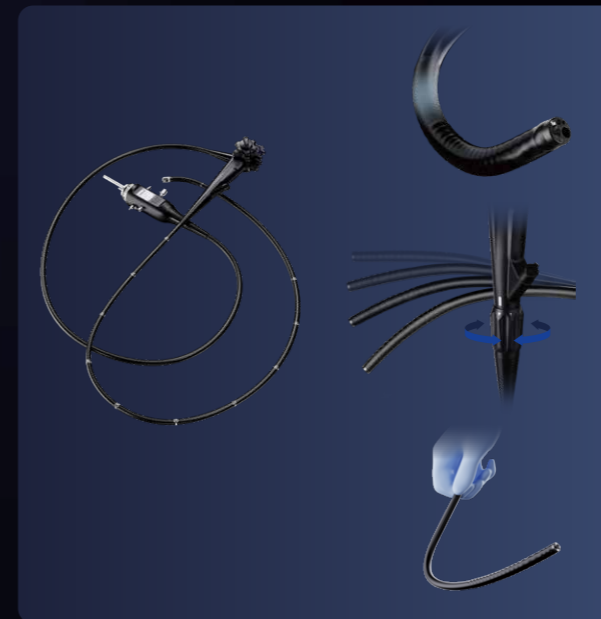
Versatile Applications

The Selenar AQ-120 builds upon the legacy of its predecessors while being specifically engineered for the latest generation of endoscopes. It caters to the diverse requirements of various departments, including gastroenterology, pulmonology, respiratory care, and ENT.



Colo Smart Assistance (CSA)

Undergoing a colonoscopy can be inherently difficult, but now you can approach this procedure with assurance.



Elastic Bending

The elastic bending section enhances patient comfort and increases the efficiency of colonoscopy procedures.

Adjustable Stiffness

The flexibility of the colonoscope insertion tube can be modified to accommodate various physician preferences or the anatomical characteristics of the colon.

Sync Force Transmission

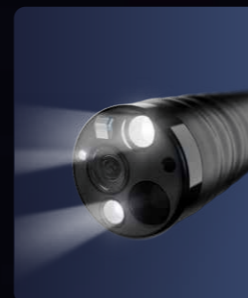
Effectively transmit force to enhance maneuverability during colonoscopy procedures.

Superior Standards, Outstanding Specifications



5th Generation Handle

Enhanced ergonomic design and decreased handle weight for the fifth generation to further minimize fatigue.



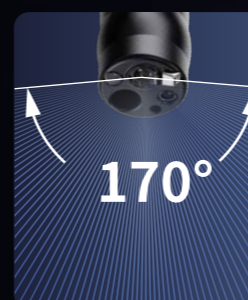
3 Light Guides

The endoscopic imaging system is enhanced by three light guides, which significantly improve illumination, providing greater and more uniform brightness, particularly in distant dark regions.



Forward Waterjet

The forward waterjet function comes standard, enhancing the efficiency and convenience of your process.



Wide Field of View

Colonoscopes feature a 170° wide field of view, which helps to minimize the miss rate, particularly in areas with colon folds.



Large Instrument Channel

Extensive instrument channels are accessible, allowing you to expand your skills beyond restricted applications.